



Growth effects of government expenditure in Nigeria: Does the level of corruption matter?

Ibrahim Iliyasu¹

Ibrahim Muhammed²



(Corresponding Author)

^{1,2}Department of Economics, Umaru Musa Yar'adua University, Katsina State, Nigeria.

¹Email: Ibrahim.iliyau@umyu.edu.ng

²Email: Ibrahimu1012@gmail.com

Abstract

A strand of literature suggests that an efficient government can complement private capital formation and boost the overall productivity of private economic agents. Nigeria has experienced uneven growth performance in the last three decades despite growing government expenditure. This paper carried out an empirical analysis of direct and indirect links among growth, government expenditure and corruption in Nigeria using annual time series data for the period from 1990 to 2020. The autoregressive distributed lag (ARDL) model was used to explore the long-run interacting effect of corruption on the nexus between growth and government expenditure. For the robustness check, the fully modified ordinary least squares (FMOLS) and dynamic ordinary least squares (DOLS) were used as alternative techniques of estimation. Directly, an increase in government expenditure and a reduction in corruption has a significant increasing effect in the short-term and long-term growth. Indirectly, reducing corruption enhances the increasing effect of government expenditure on economic growth. However, corruption reduction up to the 42.25 threshold and beyond diminishes the increasing effect of government expenditure on economic growth. This suggests that attaining sustained growth is possible by raising government expenditure and minimizing corruption. Thus, minimizing corruption associated with expenditure policy should be a top policy priority.

Keywords: Corruption, Growth, Government expenditure, ARDL, FMOLS, DOLS, Nigeria.

JEL Classification: H50; O10.

Citation | Iliyasu, I., & Muhammed, I. (2023). Growth effects of government expenditure in Nigeria: Does the level of corruption matter? *Asian Journal of Economics and Empirical Research*, 10(1), 1–10. 10.20448/ajeer.v10i1.4406

History:

Received: 24 October 2022

Revised: 6 December 2022

Accepted: 23 December 2022

Published: 12 January 2023

Licensed: This work is licensed under a [Creative Commons](https://creativecommons.org/licenses/by/4.0/)

Attribution 4.0 License

Publisher: Asian Online Journal Publishing Group

Funding: This study received no specific financial support.

Authors' Contributions: Both authors contributed equally to the conception and design of the study.

Competing Interests: The authors declare that they have no conflict of interest.

Transparency: The authors confirm that the manuscript is an honest, accurate, and transparent account of the study, that no vital features of the study have been omitted, and that any discrepancies from the study as planned have been explained.

Ethical: This study followed all ethical practices during writing.

Contents

1. Introduction	2
2. Literature Review	2
3. Data and Methodology	3
4. Results and Discussion	5
5. Conclusion and Recommendations.....	8
References.....	8

Contribution of this paper to the literature

This study contributes to the existing literature in two ways. Firstly, it overcomes the data limitation of the existing studies by generating a large (greater than 30) sample observation. Secondly, a selection of estimation techniques was used to empirically analyze the data; hence, we provide consistent estimates of the interacting role of corruption in the government expenditure–growth nexus in Africa, and specifically in Nigeria.

1. Introduction

Developing economies strive to achieve sustained, long-term growth for improved standard of living, poverty reduction, better sanitation, more education and higher life expectancy (Azam, 2022; Benjamin & Myers, 2005; World Bank, 2017). One strand of literature suggests that an efficient government can complement private capital formation, facilitate better and efficient organization of production, consumption and trade, and boost the overall productivity of private economic agents (see Barro (1990); IMF (2015); Kneller, Bleaney, and Gemmill (1999); Olofin (2001)).

However, the literature on the growth–government expenditure nexus and the growth–corruption nexus is broadly contentious. For instance, there are substantial arguments on the positive and negative influences of government expenditure on growth at theoretical and empirical levels (Alesina, Ardagna, Perotti, & Schiantarelli, 2002; Barro, 1990; Devarajan, Swaroop, & Zou, 1996; Tanzi & Zee, 1997). In addition, at least four views exist on the causal relationship between government expenditure and growth. Kouassi (2018) and Nyasha and Odhiambo (2019) aptly summarized the views to include the “government size-led economic growth view” built on the basis of the Keynesian idea that government expenditure can generate growth; “growth-led government size” deduced from Wagner’s law, which posits that growth in per capita income propels government expenditure; the “bidirectional causality view” (Abu-Bader & Abu-Qarn, 2003; Abu-Eideh, 2015) and the “neutrality view” (Afxentiou & Serletis, 1996; Ansari, Gordon, & Akuamoah, 1997; Taban, 2010).

Moreover, corruption is adjudged to either be “sand in the wheels of commerce”, meaning that corruption creates distortion and inefficiency that hinder growth and development (Alfada, 2019; Andvig & Moene, 1990; Blackburn, Bose, & Haque, 2010; Mauro, 1995; Murphy, Shleifer, & Vishny, 1993; Nur-Tegin & Jakee, 2020; Schleifer & Vishny, 1993) or “grease the wheels of commerce”, that is, corruption in some instances helps entrepreneurs to overcome obstacles and foster innovation, growth and development (Beck & Maher, 1986; Egger & Winner, 2005; Kato & Sato, 2015; Leff, 1964; Lui, 1985; Méon & Weill, 2010).

Nigeria has experienced uneven growth in the last three decades, with average GDP growth rates of 2.3%, 7.8% and 3.2% in the 1990s, 2000s and 2010s, respectively. Correspondingly, the growth rate of GDP per capita in the same period was at -0.2; 4.9 and 0.5, respectively.¹ Amid this unimpressive growth performance, the ratio of government expenditure to GDP and per capita government expenditure have fluctuated over the three decades, hovering at around an average of 8.6% and ₦170,246, respectively. But the nominal and real government expenditures have risen steadily by about 16,867.99% and 78.07%, respectively. In addition, many authors have posited that corruption in Africa, and Nigeria in particular, is systemic (Abu, Karim, & Aziz, 2015; Abu & Staniewski, 2019; Abu et al., 2022; Gyimah-Brempong, 2002; Rivi, Ogboru, & Rivi, 2020). These assertions are further corroborated by anecdotal evidence; for instance, the Economic and Financial Crime Commission (2019) investigated about 39,970 high profile corruption cases involving past governors and top government functionaries and secured about 2,544 convictions during the 2010–2019 period. Also, a recent corruption survey conducted by the National Bureau of Statistics (NBS) (2019) estimated that a total of around ₦675 billion in bribe money exchanged hands twelve months prior to the survey; this translates to about 0.52% of Nigeria’s GDP for the year.

Existing empirical studies on direct, and especially indirect, links between growth, government expenditure and corruption remain shallow in Nigeria. Ngutsav (2018); Aigheyisi (2015); and Ovat and Bassey (2014) investigated the link among the three variables, none of them estimated the marginal effects of government expenditure on growth given the level of corruption. In addition, there are specific limitations related to these studies. For example, while Ngutsav (2018) covered the period from 1981 to 2015, he failed to state how he got the data on the corruption perception index prior to 1996; he claimed that the series were integrated of order I(1) without reporting the results, rendering his findings suspicious. Aigheyisi (2015) used a limited number of observations (19) that falls short of the minimum required (30) for robust time series analysis and failed to conduct unit root and post-estimation diagnostics tests. The study by Ovat and Bassey (2014) lacks empirical rigor, and its findings were derived from a mere descriptive analysis.

Giving the competing theoretical and empirical arguments on the nexus among growth, government expenditure and corruption, Nigeria’s score card on the three variables over the study period, and the dearth of the extant literature in the country, the present paper aims to investigate the effect of government expenditure and corruption on growth in addition to their direct linear effects. This will allow us to determine whether the level of corruption moderates the effect of government expenditure on growth in Nigeria, since the former can distort the composition and productivity of the latter (Mauro, 1998; Schleifer & Vishny, 1993; Tanzi & Davoodi, 1997). The paper is structured in five sections. Section two provides a literature review; section three explains the data and methodology used; section four presents the results and discussion; and section five concludes the study and proffers some policy recommendations.

2. Literature Review

This section presents a brief review of selected studies on the interacting role of corruption on the growth–government expenditure relationship, many of which were based on cross-country and panel data regressions. For example, Del Monte and Papagni (2001) examined the indirect effect of corruption on growth in a panel of 20 Italian regions. Building on the basic growth regression and estimating a dynamic panel data regression, the study

¹These averages are computed using the World Bank’s World Development Indicators, 2020.

found that corruption reduced economic growth by lowering private investment and reducing public investment efficiency.

Blackburn, Bose, and Haque (2011) argued that corruption lowers public capital accumulation and changes the volume and quality of public expenditure in a manner that endangers growth. Similarly, D'Agostino, Dunne, and Pieroni (2016) examined the indirect channels through which corruption affects growth. The study employed an endogenous growth model to examine how corruption affects growth through military and investment spending. Findings from the study revealed that the interaction between the two components of expenditure and corruption has a strong adverse effect on growth. D'Agostino, Dunne, Lorusso, and Pieroni (2020) further explored the interactive role of military spending, corruption and institutional quality on growth. Balanced and unbalanced panel data ARDL results indicated that military spending and corruption have an important decreasing effect on growth and argued for the possibility of high military spending–high corruption trap.

Nirola and Sahu (2019) examined the links among government size, institution and state-level economic growth in India. The authors estimated an augmented Solow growth model with pooled OLS, random effects and generalized method of moments (GMM) panel estimation techniques. The results showed that a larger government size decreases state-level growth, and the decrease is higher in states with poor quality institutions and lower in states with better institutions. Nguyen and Bui (2022) examined the interacting role of corruption control in the growth–government expenditure nexus in Asia over a sample period from 2002–2019. A combination of the GMM estimation technique and the threshold model was employed. The findings showed a significant negative impact of government spending and corruption control on growth. In addition, the growth–corruption control interaction diminished the observed negative effect. In fact, when the threshold value of corruption control reached 0.01, the effect of government expenditure on growth turned positive. Tanzi and Davoodi (1997) investigated the link between corruption, public investment and growth based on a cross-country regression analysis and found a significant growth-diminishing effect of corruption through increasing the share of less productive public investment at the detriment of current expenditure, a decrease in government revenues, and a drop in the overall quality of existing public infrastructure.

The few country-level studies conducted in Nigeria include Ngutsav (2018), who examined the impact of corruption and government expenditure on growth from 1981 to 2015 using the vector error correction model and the impulse response function. The findings indicated that corruption has a significant adverse impact on growth and government expenditure has a stimulating effect on growth. In addition, corruption decreases the stimulating effect of government expenditure on growth. Aigheyisi (2015) studied the impact of corruption and government expenditure on the GDP growth rate in pre-democratic (1994–1998) and democratic (1999–2012) era sample splits using the ordinary least squares (OLS) estimation technique. The primary findings were that in both sample splits, corruption had an insignificant effect on growth and capital expenditure decreased growth. Also, recurrent expenditure had a significant growth-decreasing effect in the pre-democratic era sample, nonetheless, the effect turned positive in the democratic dispensation sample. Ovat and Bassey (2014) explored the aggregate effect of governance, corruption and public expenditure on growth in Nigeria using descriptive and content analyses of available data. The authors discerned a clear adverse aggregate effect of corruption on growth.

Overall, substantial cross-country and panel regression evidence suggests that minimizing the level of corruption can increase government expenditure productivity and efficiency, thereby enhancing the growth effect of government expenditure. Nevertheless, the lack of country-specific studies, particularly in Nigeria, calls for further studies to determine the nature and extent of the growth, public expenditure and corruption nexus, both directly and indirectly.

3. Data and Methodology

3.1. Theoretical Framework and Model Specification

The workhorse growth equation, following Barro (1990); Barro and Sala-i-Martin (1992) and Barro (1991), provides the basic framework for the growth regression analysis. The equation arises from the idea that factors capable of increasing the stocks of physical and human capital tend to promote technological progress and overall economic growth, while those that reduce incentives to invest and decrease the efficiency of well-functioning markets tend to reduce growth. In line with the theoretical exposition of Blackburn et al. (2011), we modify the base line growth equation to suit the purpose of this study, and the model is specified as follows:

$$LGDP_t = \omega_1 + \omega_2 LGX_t + \omega_3 COR_t + \omega_4 (LGX * COR_t) + \varphi' Z_t + \varepsilon_t \quad (1)$$

Equation 1 presents the econometric model, where $LGDP_t$ is the log of real GDP; LGE_t is the log of government expenditure; COR_t is the transparency of the international corruption index; and Z_t is the set of control variables, such as logarithms of gross fixed capital formation ($LGFC_t$), inflation ($LINF_t$), and openness ($LOPEN_t$). The interaction term between government expenditure and the corruption index ($LGX * COR_t$) yields the marginal effects of the variables after differentiating the growth equation with respect to government expenditure in Equation 2.

$$\frac{\partial LGDP}{\partial LGX} = \omega_2 + \omega_4 COR_t \quad (2)$$

Five fundamental policy implications can be deduced from the respective signs of ω_2 and ω_4 related to the hypothesis testing. Firstly, if $\omega_2 > 0$ and $\omega_4 > 0$, this means that government expenditure raises growth, and corruption enhances that positive effect. Thus, policymakers should increase government expenditure as it, along with corruption, are desirable ingredients of the growth process. Secondly, if $\omega_2 > 0$ and $\omega_4 < 0$, it implies that government expenditure spurs growth, and corruption diminishes this effect. Therefore, policymakers should reduce the incidence of corruption in order to maximize the positive effect of government expenditure on long-term growth. Thirdly, if $\omega_2 < 0$ and $\omega_4 > 0$, it suggests that government expenditure reduces growth, and corruption moderates that reduction. Fourthly, if $\omega_2 < 0$ and $\omega_4 < 0$, it suggests that government expenditure reduces growth and corruption amplifies that reduction. Policymakers should devise a measure to ensure that government expenditure and corruption promote growth. Finally, if the marginal effect of government expenditure on growth ($\omega_2 + \omega_4 COR_t$) increases together with the incidences of corruption, this implies that additional government

expenditure and incidences of corruption can spur growth. Contrarily, the reverse is the case if the marginal effect decreases as the incidences of corruption increases.

Table 1. Definitions and sources of the variables.

Series	Definition	A priori sign	Source
LGDP	Logarithm of gross domestic product used as a proxy for economic growth.		CBN
LGX	Logarithm of government outlays for the provision of current and capital goods and services plus transfer payment.	Positive	CBN
COR	The Transparency International corruption perception index, which measures corruption between 100 corruption-free and 0 highly corrupt countries.	Positive	TI
LGX*COR	Interaction term between the logarithm of total government outlay and the corruption perception index.		Constructed
LGFC	Log of gross fixed capital formation, which measures capital accumulation through land improvements (fences, ditches, drains, etc.); plant, machinery, and equipment purchases; and the construction of roads, railways, schools, offices, hospitals, private residential dwellings, and commercial and industrial buildings as a share of GDP.	Positive	WDI
LINF	Logarithm of inflation, measured by the annual growth rate of GDP. The implicit deflator shows the rate of price change in the economy as a whole. The GDP implicit deflator is the ratio of GDP in current local currency to GDP in constant local currency.	Positive	WDI
LOPEN	Logarithm of the sum of exports and imports of goods and services measured as a share of GDP.	Positive	WDI

Note: GDP = gross domestic product, GX = government total expenditure, COR = corruption, GFC = gross fixed capital formation, INF = inflation, OPEN = trade openness, and L = natural logarithm of the variable.

* denotes multiplication that shows the interaction of government expenditure and corruption.

3.2. Data and Econometric Techniques

The analysis covers a sample period from 1990 to 2020. Data availability, particularly on corruption,² informed the sample choice. The descriptions, measurements and sources of data for all the series are summarized in Table 1.

3.3. Unit Root Test Equations

The study examined the stationarity status of the data series prior to estimating and testing the effect of corruption on the growth–government expenditure nexus. This is required in order to avoid spurious or misleading results. The augmented Dicker–Fuller (ADF) (Dickey & Fuller, 1979) and Phillips–Perron (PP) (Phillips & Perron, 1988) tests were utilized to achieve the objective. Both the ADF and PP equations estimated are specified in Equations 3 and 4, respectively.

$$\Delta yt = \delta + \phi t + (\rho - 1)yt_{-1} + \sum_{i=1}^k \delta \Delta yt_{-i} + \mu_t \tag{3}$$

$$\Delta yt = \delta + \phi t + \phi yt_{-1} + \mu_t \tag{4}$$

Where yt is the series and u_t is the error term. The null hypothesis H_0 states that $\rho = 0$ (unit root). The alternative hypothesis H_1 states that $\rho < 0$ (series is stationary). The ADF and PP complement each other; the decision rule is to accept the null hypothesis if the test statistic is lower than the critical value at the 5% significance level and vice versa.

3.4. ARDL Bounds Test for Cointegration

To explore the long-run interacting effect of corruption on the growth–government expenditure nexus, the ARDL bounds test for cointegration technique was used (Pesaran & Shin, 1999; Pesaran, Shin, & Smith, 2001). The technique is most suitable for a combination of I(1) and I(0) series and has several advantages over the other competing techniques (e.g., Engle and Granger (1987); Johansen (1988); Johansen (1991) and Johansen and Juselius (1990)). These advantages include a varied lag length for each variable, a single reduced-form equation, and its adequacy in estimating relationships, even with a finite sample (Abu & Gamal, 2020). The estimated model is specified as follows:

$$\Delta LGDP_t = \alpha_0 + \sum_{i=1}^n \alpha_1 i \Delta LGDP_{t-i} + \sum_{i=0}^n \alpha_2 i \Delta LGX_{t-i} + \sum_{i=0}^n \alpha_3 i \Delta COR_{t-i} + \sum_{i=0}^n \alpha_4 i \Delta LGX * COR_{t-i} + \sum_{i=0}^n \alpha_5 i \Delta LGFC + \sum_{i=0}^n \alpha_6 i \Delta LINF_{t-i} + \sum_{i=0}^n \alpha_7 i \Delta LOPEN_t + \phi_1 LGDP_{t-1} + \phi_2 LGX_{t-1} + \phi_3 COR_{t-1} + \phi_4 LGX * COR_{t-1} + \phi_5 LGFC_{t-1} + \phi_6 LINF_{t-1} + \phi_7 LOPEN_{t-1} + \varepsilon_1 t \tag{5}$$

Equation 5 presents the intertemporal dynamic model, which estimates the relationship between GDP and its lagged value, and the contemporaneous and lagged values of the regressor. The bounds test for cointegration was carried out by testing the null hypothesis of no cointegration (H_0) against the alternative hypothesis (H_1) using the following equations:

$$H_0: \phi_1 = \phi_2 = \phi_3 = \phi_4 = \phi_5 = \phi_6 = \phi_7 = 0, \text{ and } H_1: \phi_1 \neq \phi_2 \neq \phi_3 \neq \phi_4 \neq \phi_5 \neq \phi_6 \neq \phi_7 \neq 0$$

The computed F-statistic (Wald test) was used to test the combined significance of the parameters and its value compared with the lower and upper critical bounds values. The F-statistic has to be significantly higher than the upper critical bound for the null hypothesis of no cointegration to be rejected.

$$LGDP_t = \phi_0 + \phi_1 LGX_t + \phi_2 COR_t + \phi_3 LGX * COR_t + \phi_4 LGFC_t + \phi_5 LINF_t + \phi_6 LOPEN_t + \varepsilon_1 t \tag{6}$$

And

$$\Delta LGDP_t = \alpha_0 + \sum_{i=1}^n \alpha_1 i \Delta LGDP_{t-i} + \sum_{i=0}^n \alpha_2 i \Delta LGX_{t-i} + \sum_{i=0}^n \alpha_3 i \Delta COR_{t-i} + \sum_{i=0}^n \alpha_4 i \Delta LGX * COR_{t-i} + \sum_{i=0}^n \alpha_5 i \Delta LGFC + \sum_{i=0}^n \alpha_6 i \Delta LINF_{t-i} + \sum_{i=0}^n \alpha_7 i \Delta LOPEN_t + \pi_1 ECT_{t-1} + \varepsilon_t \tag{7}$$

² The Transparency International corruption perception index data is only available from 1996, following Akanbi (2012). A five-year moving average was used to generate the missing data for the period from 1990 to 1995.

Equations 6 and 7 argue for long-run and short-run relationships among the variables, respectively.

The error correction term lagged by one period (ECT_{t-1}) measures the speed of adjustment required to restore any deviation/shock from the long-run equilibrium through its coefficient (π_1) that is assumed to be less than one and significant.

3.5. Diagnostic and Stability Tests

In order to validate the estimated regression results, the study carried out serial correlation, heteroscedasticity and normality diagnostic tests on the error terms. Breusch–Godfrey serial correlation and Lagrange multiplier tests were used to check if the residuals are serially correlated. The Breusch–Pagan–Godfrey heteroscedasticity test was used to check if the residuals are homoscedastic or otherwise, and finally, the Jarque–Bera test was used to test if the residuals are normally distributed.

The stability of the estimated model parameters is paramount for policy prescription; the study therefore used the cumulative sum of recursive residuals (CUSUM) and the cumulative sum of squares of the recursive residuals (CUSUMSQ) to confirm the stability status of the model parameters. If the plots of either the CUSUM or the CUSUMSQ break at the 5% lower or upper bound, then the parameters and the model are unstable (Greene, 2003).

3.6. Alternative Estimation Techniques

The fully modified ordinary least squares (FMOLS) of Hansen and Phillips (1990) and the dynamic ordinary least squares (DOLS) of Saikkonen (1992) and Stock and Watson (1993) were utilized to check the robustness and consistency of the estimated ARDL results. These techniques are effective in resolving problems of endogeneity, serial correlation and small sample bias (Abu & Gamal, 2020; Abu, 2019). The FMOLS procedure starts with the OLS estimation and then makes a non-parametric correction for any endogeneity and serial correlation which might emanate from the OLS residuals (Abu & Gamal, 2020), and it was implemented with the long-run covariance estimate (Bartlett’s kernel, Newey–West fixed bandwidth). The DOLS approach regresses one of I(1) variables on other I(1) variables and the I(0) variables, as well as the lags and leads of the first differences of the I(1) variables.

4. Results and Discussion

4.1. Preliminary Data Exploration

To understand the data, a summary of the statistics of the variables is presented in Table 2. The evidence indicates that the means and medians of all the series are slightly different, with the exception of the corruption perception index and the interaction term, which suggests that these variables are nearly symmetrical. In addition, the Jarque–Bera probability values across all the series indicate that the variables are normally distributed, so the alternative hypothesis of non-normality cannot be accepted. Generally, there is low variation in all the variables based on their respective standard deviations. However, comparatively, the corruption perception index has the highest volatility with a standard deviation value of 6.00, followed by the logarithms of GDP (1.75) and government expenditure (1.52).

Table 2. Descriptive statistics of the variables.

Variable/Statistic	LGDP	LGX	COR	LGX*COR	LGFC	LINF	LOPEN
Mean	9.70	7.20	21.1	155	3.24	3.58	4.51
Median	10.0	7.56	24.0	143	3.26	3.61	4.50
Maximum	11.9	9.23	28.0	242	3.97	3.98	4.63
Minimum	6.20	4.09	6.90	40.2	2.65	3.03	4.37
Std. dev.	1.75	1.52	6.00	64.6	0.42	0.24	0.06
Jarque–Bera (Statistic)	2.35 (0.31)	2.57 (0.28)	3.08 (0.21)	2.86 (0.24)	2.37 (0.31)	1.46 (0.48)	0.14 (0.93)
Observations	31	31	31	31	31	31	31

Notes: Figures in () are the probability values. GDP = gross capital formation, GX = government total expenditure, COR = corruption, GFC = gross fixed capital formation, INF = inflation, OPEN = trade openness, and L = natural logarithm of the variable. Also, * shows the interaction between government expenditure and corruption.

The results of the correlation analysis reported in Table 3 indicate a strong positive association between the logarithm of GDP, the logarithm of government expenditure (0.99) and the interaction term (0.85), but a moderately positive correlation with the corruption perception index (0.45) and a weak association between the logarithms of GDP and openness (0.03). In addition, there is a strong negative association between the logarithms of GDP and gross fixed capital formation (-0.93) as well as a weak negative correlation between the logarithms of GDP and inflation. Moreover, the interaction term has a strong positive relationship with the logarithms of total government expenditure (0.83) and corruption (0.85) and a strong negative association between the logarithm of gross fixed capital formation (-0.848). Finally, the logarithms of government expenditure and gross fixed capital formation are strongly negatively associated (-0.91).

Table 3. Correlation analysis.

Variable	LGDP	LGX	COR	LGX*COR	LGFC	LINF	LOPEN
LGDP	1.00						
LGX	0.99	1.00					
COR	0.45	0.42	1.00				
LGX*COR	0.85	0.83	0.85	1.00			
LGFC	-0.93	-0.91	-0.52	-0.85	1.00		
LINF	-0.20	-0.16	-0.37	-0.35	0.22	1.00	
LOPEN	0.03	0.05	-0.30	-0.19	0.02	0.14	1.00

Note: GDP = gross capital formation, GX = government total expenditure, COR = corruption, GFC = gross fixed capital formation, INF = inflation, OPEN = trade openness, and L = natural logarithm of the variable. Also, * shows the interaction between government expenditure and corruption.

4.2. Stationarity and Bounds Tests for Cointegration

Table 4 reports the outcomes of stationarity tests. Overall, evidence from the ADF/PP test statistics unanimously suggest that all the series have a unit root, apart from the log of gross fixed capital formation. This means that the series are a combination of I(0) and I(1); the latter can be made stationary after first differencing. These results further justify the use of the ARDL bounds test for cointegration.

Table 4. Stationarity test results.

Series	ADF test statistics		PP test statistics		Remark
	Level	First difference	Level	First difference	
LGDP	1.29	-2.42*	1.54	-2.36*	I(1)
LGX	1.22	-2.10*	3.64	-4.83*	I(1)
COR	-0.57	-6.22*	-0.55	-6.20*	I(1)
LGX*COR	0.58	-6.47*	0.90	-6.46*	I(1)
LGFC	-1.71**	-4.60*	-1.89**	-4.58*	I(0)
LINF	-0.89	-7.68*	-0.37	-15.32*	I(1)
LOPEN	-0.23	-6.31*	-0.23	-6.31*	I(1)

Note: * and ** indicate significance at the 5% and 10% levels, respectively.

GDP = gross capital formation, GX = government total expenditure, COR = corruption, GFC = gross fixed capital formation, INF = inflation, OPEN = trade openness, and L = natural logarithm of the variable.

Table 5 presents the results from the bounds test for cointegration. The F-statistic value of (4.82) is higher than the upper critical values at the 5% and 1% levels, respectively. Thus, the evidence confirms the existence of a long-run equilibrium relationship between the logarithms of GDP and government expenditure together with the other control variables.

Table 5. Bounds test for cointegration results.

(5%) Critical values				
Explained variables	I(0)	I(1)	F-statistic	Outcome
F(LGDP, LGX, COR, LGX*COR, LGFC, LINF, LOPEN)	2.87	4.00	4.82*	Cointegration

Note: * signifies the existence of cointegration at the 5% level of significance.

GDP = gross capital formation, GX = government total expenditure, COR = corruption, GFC = gross fixed capital formation, INF = inflation, OPEN = trade openness, and L = natural logarithm of the variable.

4.3. Results of Long-term and Short-term ARDL Coefficient Estimates

The results of the selected ARDL model are reported in Table 6. The selected optimum lag length was based on the Akaike information criterion (AIC: 1,0,0,0,01,0). Evidence indicates that government expenditure is positively and significantly related to Nigeria's long-term economic growth, but not its short-term growth. Specifically, a 1% rise in government expenditure leads to increases of around 1.06% and 0.02% in GDP in the long run and the short run, respectively. However, these effects are statistically significant at 5% in the long run but insignificant in the short run. In addition, when government expenditure is lagged by one period, its effect on growth returns to negative and is statistically significant in the short run. Our evidence aligns with the bidirectional causality thesis running from government expenditure to growth and reinforces the earlier empirical evidence reported by Joshua (2019); Babatunde (2018); Arpaia and Turrini (2008); Gitana, Agnè, and Aušra (2018); Ram (1986); Bose, Haque, and Osborn (2007); and Ghose and Das (2013).

The level of corruption, proxied by the Transparency International corruption perception index, has a significant inverse relationship with economic growth in Nigeria. An increase of 100 basis points in the corruption index (a decrease in corruption level) will raise economic growth by 0.20% in the long run and 0.05% in the short run at the 1% level. This finding supports the hypothesis that corruption is "sand in the wheels" in Nigeria and corroborates existing empirical evidence in Nigeria and beyond (Blackburn, Bose, & Haque, 2006; Blackburn et al., 2010; Mauro, 1995; Ngutsav, 2018; Nur-Tegin & Jakee, 2020; Ovat & Bassey, 2014).

The interactive term is negative and statistically significant at the 5% level. The coefficient reveals that simultaneous increases in the corruption perception index (i.e., a decrease in corruption level) and government expenditure will reduce the growth rate of the economy by about 0.03% in the long run and 0.01% in the short run. Surprisingly, this contradicts the evidence on the direct effect of corruption on growth reported above and supports the "corruption greases the wheel" hypothesis. Overall, the evidence suggests that corruption is directly "sand in the wheels of commerce" and indirectly "greases the wheels of commerce" through government expenditure in Nigeria. A similar argument, that corruption helps entrepreneurs to overcome bureaucratic inefficiency and facilitates innovation and growth, received support from Kato and Sato (2015); Méon and Weill (2010); and Egger and Winner (2005).

The rests of the results show that inflation, measured by the GDP deflator, shows a significant positive link with economic growth. A 1% increase in the rate of inflation raises the rate of economic growth by about 0.70% in the long run and 0.46% in the short run at the 5% level. The significant short-run positive effect of inflation on growth persists even when the rate of inflation is lagged by one period. Gross fixed capital formation shows an insignificant negative relation with economic growth in the long run. The negative effect, however, appears to be statistically significant in the short term. Openness seems to be insignificant in explaining long-term and short-term economic growth over the sample period. The error correction term lagged by one period (ECT₋₁) is negative and statistically significant; it shows that about 0.56% of the deviation from the long-run equilibrium is corrected over a period of one year. The R² value suggests that a 0.91% variation in the dependent variables is explained by the explanatory variables. The Durbin-Watson (DW) value of 2.00 is preliminary evidence that the error term is free of serial correlation.

Thus far, our results provide evidence that government expenditure and its interaction with the corruption perception index have significant increasing effects on GDP growth. Nonetheless, we proceed to calculate the marginal effect in order to ascertain the threshold level at which reduction in corruption will decrease the GDP

growth rate. Using the calculated long-run parameters of government expenditure and the interaction term, the marginal effects can be computed as follows:

$$\frac{\partial LGDP}{\partial LGX} = 1.056 - 0.0250COR_t \quad (8)$$

Table 6. ARDL model estimates.

Short-term parameters (the explained variable is ΔLGDP)			Long-term parameters (the explained variable is LGDP)		
Regressor	Coefficient [Standard errors]	P-value	Regressor	Coefficient [Standard errors]	P-value
ΔLGX	0.02 [0.06]	0.71	LGX	1.06* [0.18]	0.00
ΔLGX ₋₁	-0.23* [0.07]	0.01	COR	0.20* [0.03]	0.00
ΔCOR	0.05* [0.01]	0.00	LGX*COR	-0.03* [0.01]	0.00
ΔLGX*COR	-0.01** [0.00]	0.05	LGFC	-0.12 [0.13]	0.37
ΔLGFC	-0.20* [0.06]	0.00	LINF	0.70* [0.24]	0.01
ΔLINF	0.46* [0.10]	0.00	LOPEN	-0.10 [0.13]	0.45
ΔLINF ₋₁	0.89* [0.16]	0.00			
ΔLOPEN	0.03 [0.03]	0.36			
ECT ₋₁	-0.56* [0.08]	0.00	R ²		0.91
			DW		2.00

Note: GDP = gross capital formation, GX = government total expenditure, COR = corruption, GFC = gross fixed capital formation, INF = inflation, OPEN = trade openness, and L = natural logarithm of the variable. DW = Durbin–Watson.

* and ** indicate that the coefficient is significant at the 5% and 10% levels, respectively; L denotes the logarithms; and Δ denotes first differences.

The marginal effects estimated at the zero, minimum, mean and maximum levels of corruption with respect to the growth rate of GDP are 1.056, 0.8835, 0.528875, and 0.356, respectively. This suggests that an increase in the corruption perception index (i.e., a decrease in corruption) has a growth-decreasing effect through government expenditure; the more stringent the measure in reducing corruption, the higher the growth-reducing effect. Moreover, the threshold level of the corruption perception index to the growth rate of GDP is calculated at about 42.25; below this level, the marginal effect of government expenditure on the GDP growth rate is positive, but at this threshold level and beyond, the marginal effect turns negative. The implication of this threshold is that, at the current level of development (i.e., current institutional setting), an element of corruption is needed to overcome obstacles resulting from weak institutions and inefficient bureaucrats. Thus, the hypothesis that “corruption greases the wheels of commerce” can be confirmed in this instance.

4.4. Results of Diagnostic Tests and Stability Tests

Table 7 presents the results of the diagnostic tests. In the Breusch–Godfrey serial correlation LM test, the F-statistic and corresponding p-value (0.78 [0.48]) indicate that the null hypothesis of no serial correlation is accepted, and we can conclude that the model is free from serial correlation. The Breusch–Pagan–Godfrey heteroscedasticity test F-statistic and the corresponding p-value of (1.30 [0.32]) suggest that the model is homoscedastic. Also, the Jarque–Bera normality test F-statistic and corresponding p-value (1.38 [0.50]) confirm that the model’s error term is normally distributed.

Table 7. Post-estimation diagnostic tests.

Test statistic	Estimate
Serial correlation: F(2,12)	0.78 [0.48]
Normality: Jarque–Bera	1.38 [0.50]
Heteroscedasticity: F[15;13]	1.30 [0.32]

The stability of the model is attested by the plots in Figure 1. The plots of the sum of the recursive residuals test (CUSUM) and the sum of the recursive squared residuals test (CUSUM of squares) lie within the boundaries at the 5% level.

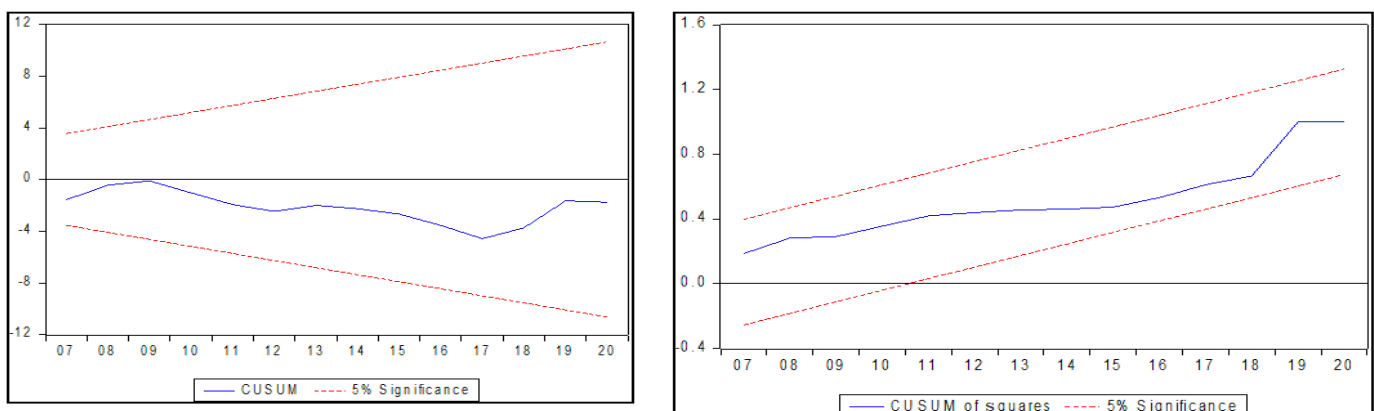


Figure 1. Plots of CUSUM and CUSUM of squares.

4.5. Results of Alternatives Cointegration Estimation Techniques: FMOLS and DOLS

Table 8 presents the estimates from the fully modified ordinary least squares (FMOLS) and dynamic ordinary least squares (DOLS). The long-run increasing effect of government expenditure on growth is consistent across the FMOLS estimated results. A 1% rise in government expenditure will increase the GDP growth rate by 0.80% and 1.48% in long-run for the FMOLS and DOLS models at the 1% level, respectively. Similarly, an increase of 100 basis points in the corruption perception index (i.e., a decrease in corruption level) will raise the growth of GDP by 0.04% and 0.03% in the long-run in the FMOLS and DOLS models at the 5% level, respectively. Furthermore, the coefficient of the interactive term confirms the negative and significant ARDL results, implying that simultaneous increases in government expenditure and the corruption perception index (i.e., a decrease in corruption) will reduce the growth rate of GDP.

Interestingly, the logarithms of gross fixed capital formation, inflation and openness are in line with our *a priori* expectation and are statistically significant. A 1% increase in capital formation will increase the growth rate of GDP by 0.31% and 0.38% in the FMOLS and DOLS models, respectively. Also, a rise in the rate of inflation by 1% will accelerate the growth rate of GDP by 0.65% and 0.40% in the FMOLS and DOLS models, respectively. Finally, opening up the economy by 1% will raise the GDP growth rate by 0.22% and 0.54% in the FMOLS and DOLS models, respectively.

Table 8. FMOLS and DOLS estimations.

FMOLS: D.V. = LGDP			DOLS: D.V. = LGDP		
Regressor	Coefficient [Standard error]	P-value	Coefficient [Standard error]	P-value	
LGX	0.80* [0.09]	0.00	1.48* [0.08]	0.00	
COR	0.04* [0.00]	0.00	0.03* [0.002]	0.00	
LGX*COR	-0.05** [0.03]	0.05	-0.07* [0.01]	0.00	
LGFC	0.31* [0.06]	0.00	0.38* [0.04]	0.00	
LINF	0.65* [0.10]	0.00	0.40* [0.09]	0.01	
LOPEN	0.22* [0.07]	0.00	0.54* [0.08]	0.00	

Note: * and ** denote significance at 5% and 10%, respectively; L denotes logarithms; D.V. = dependent variable

GDP = gross capital formation, GX = government total expenditure, COR = corruption, GFC = gross fixed capital formation, INF = inflation, OPEN = trade openness, and L = natural logarithm of the variable.

5. Conclusion and Recommendations

This study examined the interactive effect of corruption on the government expenditure–growth nexus in Nigeria over the 1990–2020 period. The objective was to investigate how the level of corruption proxied by the Transparency International corruption perception index influences the relationship between government expenditure and growth. The analysis was carried out using the ARDL, FMOLS and DOLS estimation techniques.

Our primary finding is that, directly, government expenditure and control of corruption are enhance growth in both the long-run and short-run, implying that corruption is “sand in the wheels of commerce” in Nigeria. But the results from the interactive term indicate that corruption indirectly “greases the wheels of commerce” below the 4.25 threshold level in the Nigerian growth processes through government expenditure. The plausible explanation is that certain elements of corruption are helpful in overcoming inefficiency resulting from weak institutions and bureaucratic bottlenecks.

References

- Abu-Bader, S., & Abu-Qarn, A. S. (2003). Government expenditures, military spending and economic growth: Causality evidence from Egypt, Israel, and Syria. *Journal of Policy Modeling*, 25(6-7), 567-583. [https://doi.org/10.1016/s0161-8938\(03\)00057-7](https://doi.org/10.1016/s0161-8938(03)00057-7)
- Abu-Eideh, O. M. (2015). Causality between public expenditure and GDP growth in Palestine: An econometric analysis of Wagner's law. *Journal of Economics and Sustainable Development*, 6(2), 189-199.
- Abu, N., Karim, M. Z. A., & Aziz, M. I. A. (2015). Low savings rates in the economic community of West African States (ECOWAS): The role of corruption. *Journal of Economic Cooperation and Development*, 36(2), 63-90.
- Abu, N., & Staniewski, W. M. (2019). Determinants of corruption in Nigeria: Evidence from various estimation techniques. *Economic Research*, 32(1), 3052-3076. <https://doi.org/10.1080/1331677x.2019.1655467>
- Abu, N., & Gamal, A. A. M. (2020). An empirical investigation of the twin deficits hypothesis in Nigeria: Evidence from cointegration techniques. *Contemporary Economics*, 14(3), 285-306. <https://doi.org/10.5709/ce.1897-9254.405>
- Abu, N., Karim, M. Z. A., David, J., Sakanko, M. A., Ben-Obi, O. A., & Gamal, A. A. M. (2022). The behaviour of tax revenue amid corruption in Nigeria: Evidence from the non-Linear ARDL approach. *Economic Studies*, 31(4), 55-76.
- Abu, N. (2019). Inflation and unemployment trade-off: A re-examination of the Phillips curve and its stability in Nigeria. *Contemporary Economics*, 13(1), 21-35.
- Afxentiou, P. C., & Serletis, A. (1996). Government expenditures in the European Union: Do they converge or follow Wagner's Law? *International Economic Journal*, 10(3), 33-47. <https://doi.org/10.1080/10168739600080018>
- Aigheyisi, O. S. (2015). Corruption, government expenditures and economic performance: Nigeria's experience in the new democratic era (1999-2012). *African Journal of Sustainable Development*, 5(1), 17-38.
- Akanbi, O. A. (2012). Role of governance in explaining domestic investment in Nigeria. *South African Journal of Economics*, 80(4), 473-489. <https://doi.org/10.1111/j.1813-6982.2012.01320.x>
- Alesina, A., Ardagna, S., Perotti, R., & Schiantarelli, F. (2002). Fiscal policy, profits, and investment. *American Economic Review*, 92(3), 571-589. <https://doi.org/10.1257/00028280260136255>
- Alfada, A. (2019). Corruption and economic growth in ASEAN member countries. *Economics and Finance in Indonesia*, 65(2), 111-131. <https://doi.org/10.47291/efi.v65i2.628>
- Andvig, J. C., & Moene, K. O. (1990). How corruption may corrupt. *Journal of Economic Behavior & Organization*, 13(1), 63-76. [https://doi.org/10.1016/0167-2681\(90\)90053-g](https://doi.org/10.1016/0167-2681(90)90053-g)
- Ansari, M. I., Gordon, D. V., & Akuamoah, C. (1997). Keynes versus Wagner: Public expenditure and national income for three African countries. *Applied Economics*, 29(4), 543-550. <https://doi.org/10.1080/000368497327038>
- Arpaia, A., & Turrini, A. (2008). *Government expenditure and economic growth in the EU: Long-run tendencies and short-term adjustment*. Retrieved from Economic Papers No. 300, European Communities:
- Azam, M. (2022). Governance and economic growth: Evidence from 14 Latin America and Caribbean countries. *Journal of the Knowledge Economy*, 13(2), 1470-1495. <https://doi.org/10.1007/s13132-021-00781-2>
- Babatunde, S. A. (2018). Government spending on infrastructure and economic growth in Nigeria. *Economic Research*, 31(1), 997-1014. <https://doi.org/10.1080/1331677x.2018.1436453>

- Barro, R. J. (1990). Government spending in a simple model of endogenous growth. *Journal of Political Economy*, 98(5, Part 2), S103-S125. <https://doi.org/10.1086/261726>
- Barro, R. J., & Sala-i-Martin, X. (1992). Public finance in models of economic growth. *The Review of Economic Studies*, 59(4), 645-661. <https://doi.org/10.2307/2297991>
- Barro, R. J. (1991). Economic growth in a cross section of countries. *Quarterly Journal of Economics*, 106, 407-443. <https://doi.org/10.2307/2937943>
- Beck, P. J., & Maher, M. W. (1986). A comparison of bribery and bidding in thin markets. *Economics Letters*, 20(1), 1-5. [https://doi.org/10.1016/0165-1765\(86\)90068-6](https://doi.org/10.1016/0165-1765(86)90068-6)
- Benjamin, M. F., & Myers, J. J. (2005). The moral consequences of economic growth. Carnegie Council for Ethics in International Affairs.1-9. Retrieved from: <https://www.carnegiecouncil.org/media/series/39/20051027-the-moral-consequences-of-economic-growth>.
- Blackburn, K., Bose, N., & Haque, M. E. (2006). The incidence and persistence of corruption in economic development. *Journal of Economic Dynamics and Control*, 30(12), 2447-2467. <https://doi.org/10.1016/j.jedc.2005.07.007>
- Blackburn, K., Bose, N., & Haque, M. E. (2011). Public expenditures, bureaucratic corruption and economic development. *The Manchester School*, 79(3), 405-428. <https://doi.org/10.1111/j.1467-9957.2009.02168.x>
- Blackburn, K., Bose, N., & Haque, E. M. (2010). Endogenous corruption in economic development. *Journal of Economic Studies*, 37(1), 4-25. <https://doi.org/10.1108/01443581011012234>
- Bose, N., Haque, M. E., & Osborn, D. R. (2007). Public expenditure and economic growth: A disaggregated analysis for developing countries. *The Manchester School*, 75(5), 533-556. <https://doi.org/10.1111/j.1467-9957.2007.01028.x>
- D'Agostino, G., Dunne, J. P., Lorusso, M., & Pieroni, L. (2020). Military spending, corruption, persistence and long run growth. *Defence and Peace Economics*, 31(4), 423-433. <https://doi.org/10.1080/10242694.2020.1751503>
- D'Agostino, G., Dunne, J. P., & Pieroni, L. (2016). Government spending, corruption and economic growth. *World Development*, 84, 190-205. <https://doi.org/10.1016/j.worlddev.2016.03.011>
- Del Monte, A., & Papagni, E. (2001). Public expenditure, corruption, and economic growth: The case of Italy. *European Journal of Political Economy*, 17(1), 1-16. [https://doi.org/10.1016/S0176-2680\(00\)00025-2](https://doi.org/10.1016/S0176-2680(00)00025-2)
- Devarajan, S., Swaroop, V., & Zou, H.-F. (1996). The composition of public expenditure and economic growth. *Journal of Monetary Economics*, 37(2), 313-344. [https://doi.org/10.1016/0304-3932\(96\)01249-4](https://doi.org/10.1016/0304-3932(96)01249-4)
- Dickey, D. A., & Fuller, W. A. (1979). Distribution of the estimators for autoregressive time series with a unit root. *Journal of the American Statistical Association*, 74(366a), 427- 431. <https://doi.org/10.2307/2286348>
- Economic and Financial Crime Commission. (2019). Operational Statistics (2010 – 2019). Retrieved from <https://www.efcc.gov.ng/efcc-operational-statistics1>.
- Egger, P., & Winner, H. (2005). Evidence on corruption as an incentive for foreign direct investment. *European Journal of Political Economy*, 21(4), 932-952. <https://doi.org/10.1016/j.ejpoleco.2005.01.002>
- Engle, R. F., & Granger, C. W. J. (1987). Co-integration and error correction estimates: Representation, estimation, and testing. *Econometrica*, 55(2), 251-276. <https://doi.org/10.2307/1913236>
- Ghose, A., & Das, S. (2013). Government size and economic growth in emerging market economies: A panel co-integration approach. *Macroeconomics and Finance in Emerging Market Economies*, 6(1), 14-38. <https://doi.org/10.1080/17520843.2012.697075>
- Gitana, D., Agnè, Š., & Aušra, L. (2018). Government expenditure and economic growth in the European Union Countries. *International Journal of Social Economics*, 45(2), 372-386. <https://doi.org/10.1108/IJSE-12-2016-0365>
- Greene, W. (2003). *Econometric analysis* (5th ed.). New Jersey: Prentice Hall.
- Gyimah-Brempong, K. (2002). Corruption, economic growth, and income inequality in Africa. *Economics of Governance*, 3(3), 183-209. <https://doi.org/10.1007/s101010200045>
- Hansen, B. E., & Phillips, P. C. (1990). Estimation and inference in models of cointegration: A simulation study. *Advances in Econometrics*, 8, 225-248.
- IMF. (2015). Fiscal policy and long-term growth. IMF Policy Paper. Washington DC. Retrieved from <https://www.imf.org/external/np/pp/eng/2015/042015.pdf>.
- Johansen, S. (1988). Statistical analysis of cointegration vectors. *Journal of Economic Dynamics and Control*, 12(2-3), 231-254. [https://doi.org/10.1016/0165-1889\(88\)90041-3](https://doi.org/10.1016/0165-1889(88)90041-3)
- Johansen, S. (1991). Estimation and hypothesis testing of cointegration vectors in Gaussian vector autoregressive models. *Econometrica*, 59(6), 1551-1580. <https://doi.org/10.2307/2938278>
- Johansen, S., & Juselius, K. (1990). Maximum likelihood estimation and inference on cointegration—with applications to the demand for money. *Oxford Bulletin of Economics and statistics*, 52(2), 169-210. <https://doi.org/10.1111/j.1468-0084.1990.mp52002003.x>
- Joshua, U. (2019). An ARDL approach to the government expenditure and economic growth Nexus in Nigeria. *Academic Journal of Economic Studies*, 5(3), 152-160.
- Kato, A., & Sato, T. (2015). Greasing the wheels? The effect of corruption in regulated manufacturing sectors of India. *Canadian Journal of Development Studies*, 36(4), 459-483. <https://doi.org/10.1080/02255189.2015.1026312>
- Kneller, R., Bleaney, M. F., & Gemmill, N. (1999). Fiscal policy and growth: Evidence from OECD countries. *Journal of Public Economics*, 74(2), 171-190. [https://doi.org/10.1016/S0047-2727\(99\)00022-5](https://doi.org/10.1016/S0047-2727(99)00022-5)
- Kouassi, K. B. (2018). Public spending and economic growth in developing countries: A synthesis. *Financial Markets, Institutions and Risks*, 2(2), 22-30.
- Leff, N. H. (1964). Economic development through bureaucratic corruption. *American Behavioral Scientist*, 8(3), 8-14. <https://doi.org/10.1177/000276426400800303>
- Lui, F. T. (1985). An equilibrium queuing model of bribery. *Journal of Political Economy*, 93(4), 760-781. <https://doi.org/10.1086/261329>
- Mauro, P. (1995). Corruption and growth. *Quarterly Journal of Economics*, 110(3), 681-712. <https://doi.org/10.2307/2946696>
- Mauro, P. (1998). Corruption and the composition of government expenditure. *Journal of Public Economics*, 69(2), 263-279. [https://doi.org/10.1016/S0047-2727\(98\)00025-5](https://doi.org/10.1016/S0047-2727(98)00025-5)
- Méon, P. G., & Weill, L. (2010). Is corruption an efficient Grease? *World Development*, 38(3), 244-259. <https://doi.org/10.1016/j.worlddev.2009.06.004>
- Murphy, K. M., Shleifer, A., & Vishny, R. W. (1993). Why is rent-seeking so costly to growth? *The American Economic Review*, 83(2), 409-414.
- National Bureau of Statistics (NBS). (2019). Corruption in Nigeria: Patterns and trends. Retrieved from www.nigerianstat.gov.ng.
- Ngutsav, A. S. (2018). Corruption, government expenditure and economic growth in Nigeria. *Lafia Journal of Economics and Management Sciences*, 3(1), 41-55.
- Nguyen, M.-L. T., & Bui, N. T. (2022). Government expenditure and economic growth: Does the role of corruption control matter? *Heliyon*, 8(10), e10822. <https://doi.org/10.1016/j.heliyon.2022.e10822>
- Nirola, N., & Sahu, S. (2019). The interactive impact of government size and quality of institutions on economic growth - evidence from the states of India. *Heliyon*, 5(3), e01352. <https://doi.org/10.1016/j.heliyon.2019.e01352>
- Nur-Tegin, K., & Jakee, K. (2020). Does corruption grease or sand the wheels of development? New results based on disaggregated data. *The Quarterly Review of Economics and Finance*, 75, 19-30. <https://doi.org/10.1016/j.qref.2019.02.001>
- Nyasha, S., & Odhiambo, N. M. (2019). Government size and economic growth: A review of international literature. *SAGE Open*, 9(3), 1-12. <https://doi.org/10.1177/2158244019877200>
- Olofin, S. (2001). *An introduction to macroeconomics*. Lagos, Nigeria: Malthouse Press Limited.
- Ovat, O. O., & Basse, E. E. (2014). Corruption, governance and public spending in Nigeria: Implications for economic growth. *British Journal of Economics, Management & Trade*, 4(11), 1679-1699. <https://doi.org/10.9734/bjemt/2014/10531>
- Pesaran, M. H., & Shin, Y. (1999). *An autoregressive distributed lag modeling approach to cointegration analysis*. In: Strom, S. *Econometric society monographs* (No. 31). Cambridge, UK: Cambridge University Press.

- Pesaran, H. M., Shin, Y., & Smith, R. J. (2001). Bounds testing approaches to the analysis of level relationships. *Journal of Applied Econometrics*, 16(3), 289–326. <https://doi.org/10.1002/jae.616>
- Phillips, P. C., & Perron, P. (1988). Testing for a unit root in time series regression. *Biometrika*, 75(2), 335-346. <https://doi.org/10.1093/biomet/75.2.335>
- Ram, R. (1986). Government size and economic growth: A new framework and some evidence from cross-section and time-series data. *American Economic Review*, 76(1), 191–203.
- Rivi, M. T., Ogboru, I., & Rivi, D. J. (2020). An analysis of the long-run relationship between corruption and debt sustainability in Nigeria. *RAIS Journal for Social Sciences*, 4(2), 71-88.
- Saikkonen, P. (1992). Estimation and testing of cointegrated systems by an autoregressive approximation. *Econometric Theory*, 8(1), 1-27. <https://doi.org/10.1017/s0266466600010720>
- Schleifer, A., & Vishny, R. (1993). Corruption. *Quarterly Journal of Economics*, 108(3), 599–617.
- Stock, J. H., & Watson, M. W. (1993). A simple estimator of cointegrating vectors in higher order integrated systems. *Econometrica*, 61(4), 783-820. <https://doi.org/10.2307/2951763>
- Taban, S. (2010). An examination of the government spending and economic growth nexus for Turkey using the bound test approach. *International Research Journal of Finance and Economics*, 48(1), 184-193.
- Tanzi, V., & Zee, H. E. (1997). Fiscal policy and long-run growth. *Staff Papers*, 44(2), 179-209.
- Tanzi, V., & Davoodi, H. (1997). *Corruption, public investment, and growth*. Retrieved from IMF Working Paper, No. WP/97/139:
- World Bank. (2017). World development report 2017: Governance and the law: Main report (English). World Development Report Washington, D.C. : World Bank Group. Retrieved from: <http://documents.worldbank.org/curated/en/774441485783404216/Main-report>.